



# គំរោងរៀបចំប្រព័ន្ធទិន្នន័យ - ព័ត៌មានបរិស្ថាននៃ ឋានន័យជីវមណ្ឌលបឹងទន្លេសាប

**Tonle Sap Biosphere Reserve Environmental Information Database  
Project (TSBR-ED)**

## សិក្ខាសាលាស្តីពី ការបែងចែកទិន្នន័យ - ព័ត៌មានសំរាប់អ្នកពាក់ព័ន្ធ

**Stakeholders' Workshop on  
Data Information Sharing**

**5th May 2006**

**Apsara Angkor Hotel, Siem Reap, Cambodia**

**Sanjay Saxena**  
Team Leader, TSBR-ED

# Objectives of TSBR Environmental Database (TSBR-ED)

- The main objective of TSBR-ED is "To plan, implement and build the capacity for a strategically sound approach for an environmental information database and related functions within the TSBR Secretariat, which will serve near term needs and have the capacity to be readily augmented through extension of existing and addition of further features at a later time."
- The TSBR-ED Project aims to put in place a data management framework, supporting infrastructure and capacity among TSBR Secretariat staff for efficient, functional archiving and distribution of data and information among the user community concerned with the TSBR.

# Components of TSBR-ED

- **Component 1:** Strategic Approach, Framework and Action Plan
- **Component 2:** Clearinghouse Mechanism
- **Component 3:** Database
- **Component 4:** Website
- **Component 5:** Publications
- **Component 6:** Documentation Center
- **Component 7:** Hardware, Physical Facilities and Materials

# Key Principles for TSBR-ED

- TSBR-ED will follow a participatory and collaborative approach for all its activities.
- Win-Win strategy :
  - All agencies must derive some benefits in return for sharing data; and
  - Data Producers must have complete control over the viewership and content of the data that they are share
- TSBR-ED to follow “build on what exists” approach
- The Environmental database must be easy to use and maintain

# What is Data and Information?

## Data

- A collection of facts from which conclusions may be drawn

## Information

- Information is the result of processing, manipulating and organizing data in a way that adds to the knowledge of the person receiving it.

**For TSBR-ED we are compiling both data and information**



# Data Types and What Is Included

- **Textual**  
Reports, Aide Memoiré, Notes, Concept Papers, Articles etc.
  - **Tabular**  
Database Tables, Excel Spreadsheets, Word Tables etc.
  - **Spatial data**  
Maps, Geo referenced data, GIS applications etc.
- Data / information on :**
- Any environmental aspect; and
  - Pertaining to Tonle Sap Region

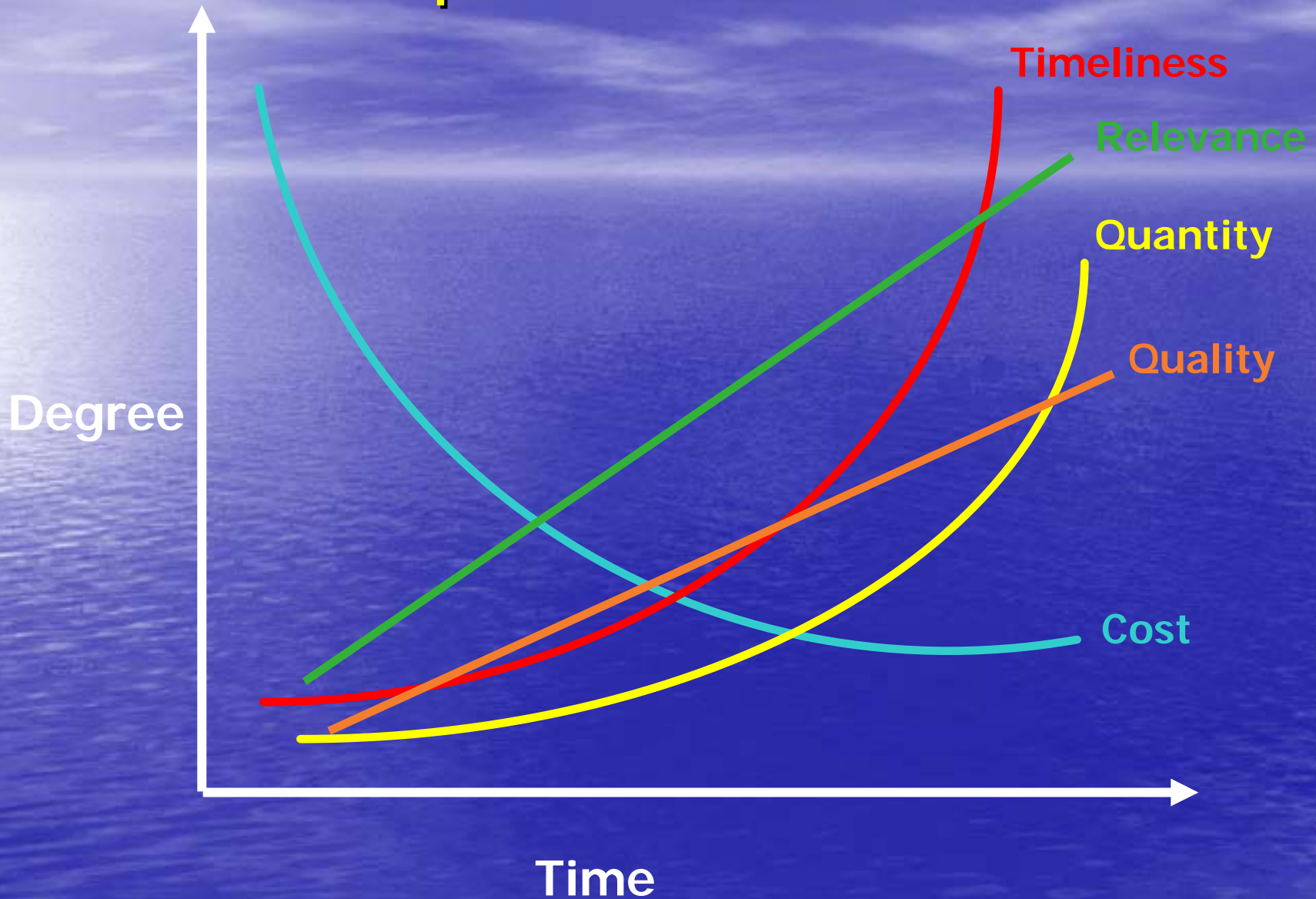
# Why do we need to share data?

## Because

- No single agency can collect all the data needed to understand and deal with the complexities of environmental issues
- Data is costly – make better use of limited funding.
- Data collection takes time. We save other agencies time and they save ours
- Sharing helps avoid duplication and improves consistency in decision making

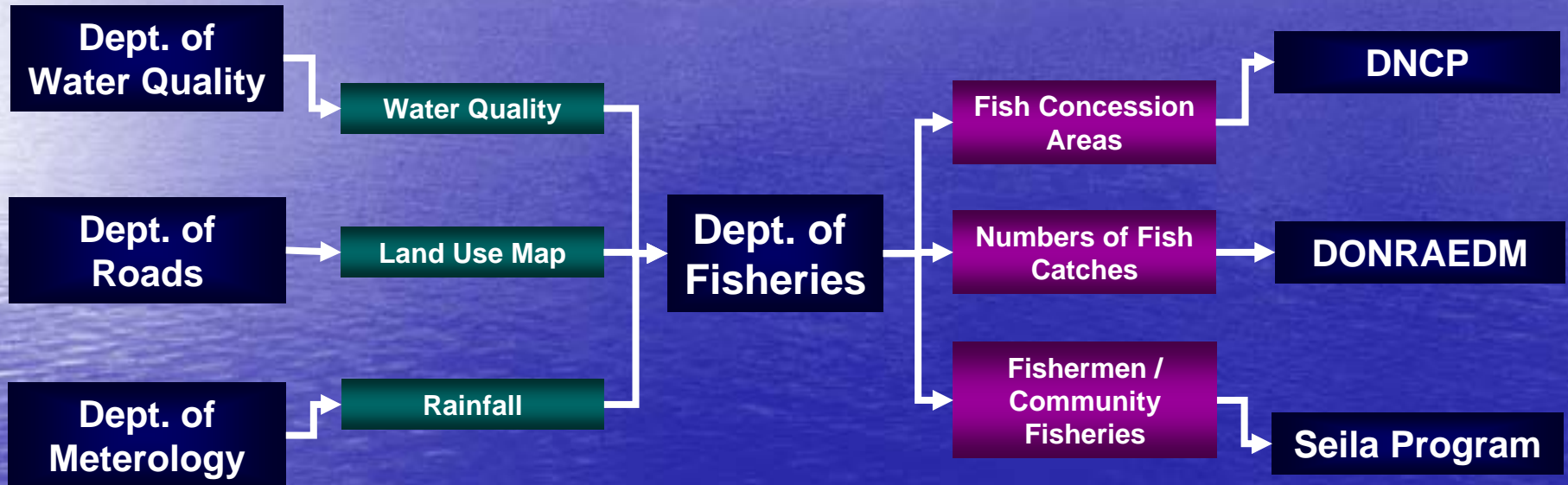
**We must learn to share data effectively**

# Computerization Process



# Data-Information Exchange

## Data Producers Vs Data Consumers



# Example of Data Exchange

Ministries	Departments	Data Producer	Data Requirement	Data Sources
MAFF	Dept. of Fishery	Fish Concession Areas	Water Quality	Dept. of Water Quality
		Numbers of Fish Catches	Land use map	Dept. of Roads
		Fishermen/Community Fisheries	Rainfall	Dept. of Meteorology
	Dept. of Agronomy	Amount of Pesticide/fertilizer Use	Population Distribution	Dept. of Geography
		Areas of Cultivated Land	Land use Classification	Dept. of Roads
		Soils map	Forest/Land Covers	Forest Administration
	Forest Administration	Flora and Fauna in a Certain Area	Protected Areas Monitoring/Managt.	DNCP
		Forest/Land Covers	Administrative Boundaries and Locations	Dept. of Geography
		Timber / Non-timber Collection	Socio-economic Condition	Seila Program
MOWRAM	Dept. of Hydrology and Water Works	Water Level	Topography Map	Dept. of Geography
		Water Bank	Soils map or Geology	Dept. of Agronomy
		Weather and flood Forecast	River System	Dept. of Roads
	Dept. of Meteorology	Rainfall	Areas of Cultivated Land	Dept. of Agronomy
		Temperature	Forest/Land Covers	Forest Administration
		Wind Velocity/ Humidity	Topography Map	Dept. of Geography
	Dept. of Water Quality	Water Quality	Amount of Pesticide/fertilizer Use	Dept. of Agronomy
		Station Location	Waste Dumping Sites/Landfill	Dept. of Pollution Control
		Water Capacity	River System	Dept. of Roads

# Example of Data Exchange

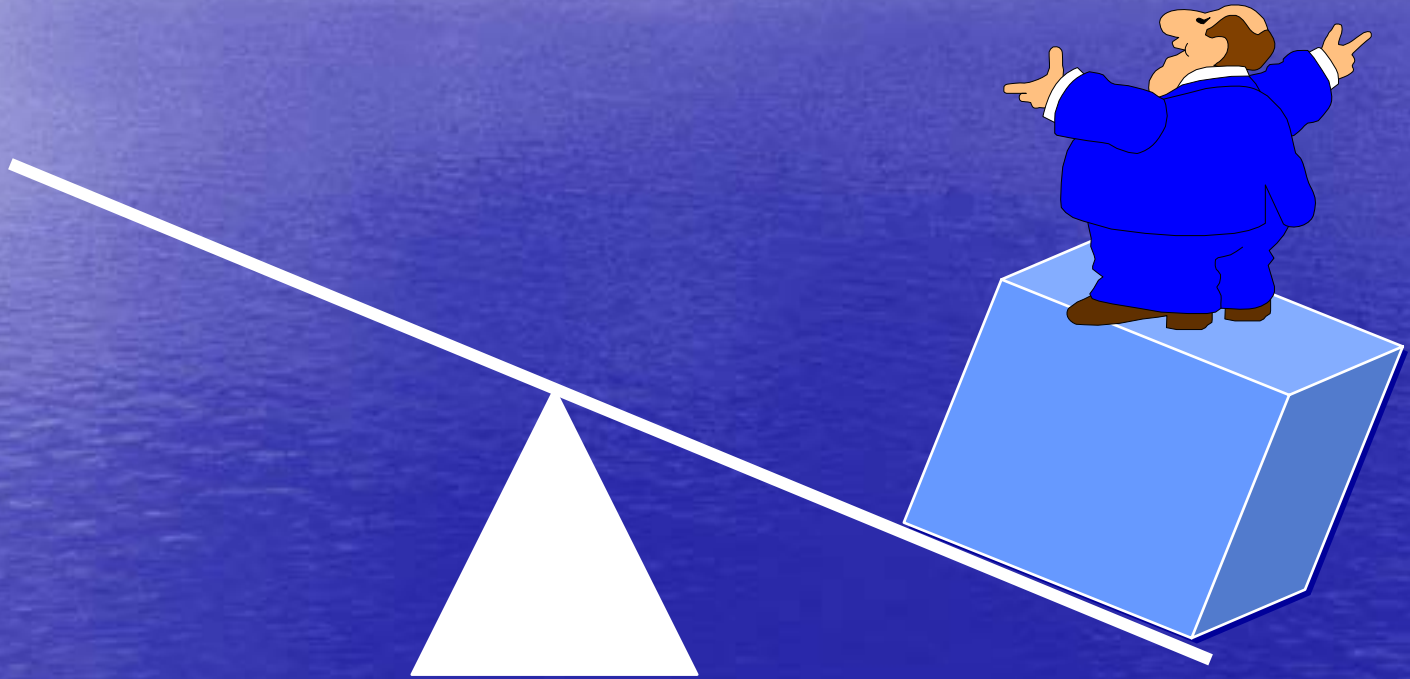
<b>Ministries</b>	<b>Departments</b>	<b>Data Producer</b>	<b>Data Requirement</b>	<b>Data Sources</b>
MoE	<b>Dept. of Nature Conservation and Protection (DNCP)</b>	<i>Protected Areas Legislation</i>	Fish Concession Areas	Dept. of Fishery
		<i>Protected Areas Monitoring/Management</i>	Timbeer/Non-timber Collection	Forest Administration
		<i>Endangered/Threatened Species</i>	Biodiversity Habitats in Pas	Dept. of Natural Resources Assessment and Environmental Data Management (DONRAEDM)
	<b>Dept. of Pollution Control</b>	<i>Raw Materials Used by Factories</i>	Topography Map	Dept. of Geography
		<i>Waste Dumping Sites/Landfill</i>	Roads, Railway and River System	Dept. of Roads
		<i>Water Pollution Substances</i>	Population Distribution	Dept. of Geography
	<b>Dept. of Natural Resources Assessment and Environmental Data Management (DONRAEDM)</b>	<i>State of Environment and Environmental Performance Assessment</i>	Waste Dumping Sites/Landfill	Dept. of Pollution Control
		<i>Protected Area Boundaries and Zonation</i>	Weather and flood Forecast	Dept. of Hydrology and Water Works
		<i>Biodiversity Habitats in PAs</i>	Numbers of Fish Catches	Dept. of Fishery
MLMUPC	<b>Dept. of Geography</b>	<i>Administrative Boundaries and Locations</i>	Roads, Railway and River System	Dept. of Roads
		<i>Topography Map</i>	Household condition	Seila Program
		<i>Population Distribution</i>	Protected Area Boundaries and Zonation	Dept. of Natural Resources Assessment and Environmental Data Management (DONRAEDM)

# Example of Data Exchange



<b>Ministries</b>	<b>Departments</b>	<b>Data Producer</b>	<b>Data Requirement</b>	<b>Data Sources</b>
MoPT	Dept. of Roads	<i>Land Use Map</i>	Topography Map	Dept. of Geography
		<i>Roads, Railway and River System</i>	Protected Area Boundaries and Zonation	Dept. of Natural Resources Assessment and Environmental Data Management (DONRAEDM)
		<i>Ferries, ports and habours</i>	Water Bank	Dept. of Hydrology and Water Works
MoI	Seila Program	<i>Socio-economic condition</i>	Fishermen/Community Fisheries	Dept. of Fishery
		<i>Household condition</i>	Roads, Railway and River System	Dept. of Roads
		<i>Poverty</i>	State of Environment and Environmental Performance Assessment	Dept. of Natural Resources Assessment and Environmental Data Management (DONRAEDM)

TSBR-ED provides an excellent opportunity to leverage your resources more optimally



TSBR-ED provides an excellent opportunity to leverage your resources more optimally



**Leveraging - Maximum results with minimal efforts !**