



**គំរោងប្រើប្រាស់ព័ត៌មានទិន្នន័យ - ព័ត៌មានបរិស្ថានវិទ្យាស្រុកស្ទឹងត្រែង**  
Tonle Sap Biosphere Reserve Environmental Information Database Project (TSBR-ED)

**សិក្ខាសាលាស្តីពី**  
**ការចែករំលែកទិន្នន័យ - ព័ត៌មានសំរាប់អ្នកពាក់ព័ន្ធ**

Stakeholders' Workshop on Data Information Sharing

**ទិន្នន័យ - ព័ត៌មានដែលមាន និងត្រូវការ**  
**Existing data and requirement**

5th May 2006  
Apsara Angkor Hotel, Siem Reap

# Data-Information needs for Database Compilation

- Main objective of TSBR-ED
  - Establish an environmental database
  - Support Tonle Sap Secretariat's coordination function
  - Serve information needs of all stakeholders
  - Easy access the data/information
- Data/information compilation
  - Data types (textual, tabular and spatial data)
  - Data / information should be on all environmental aspects.
  - Data / information requirements of different stakeholder must be addressed

# Existing Data held by Dept. of Natural Resources Assessment and Environmental Data Management (Data Producer)

Tabular Data	Textual Data	Spatial Data
→ Areas under protection	State of Environment Reports	Protected Area Boundaries
Habitat Types and Areas	Environmental Performance Assessment Report	Protected Area Zonation
Number of Rangers	Environmental Indicators Analysis	Biodiversity Habitats in PAs
Communities in PAs	Integrated Environmental Assessment	Landfill sites
...	...	...

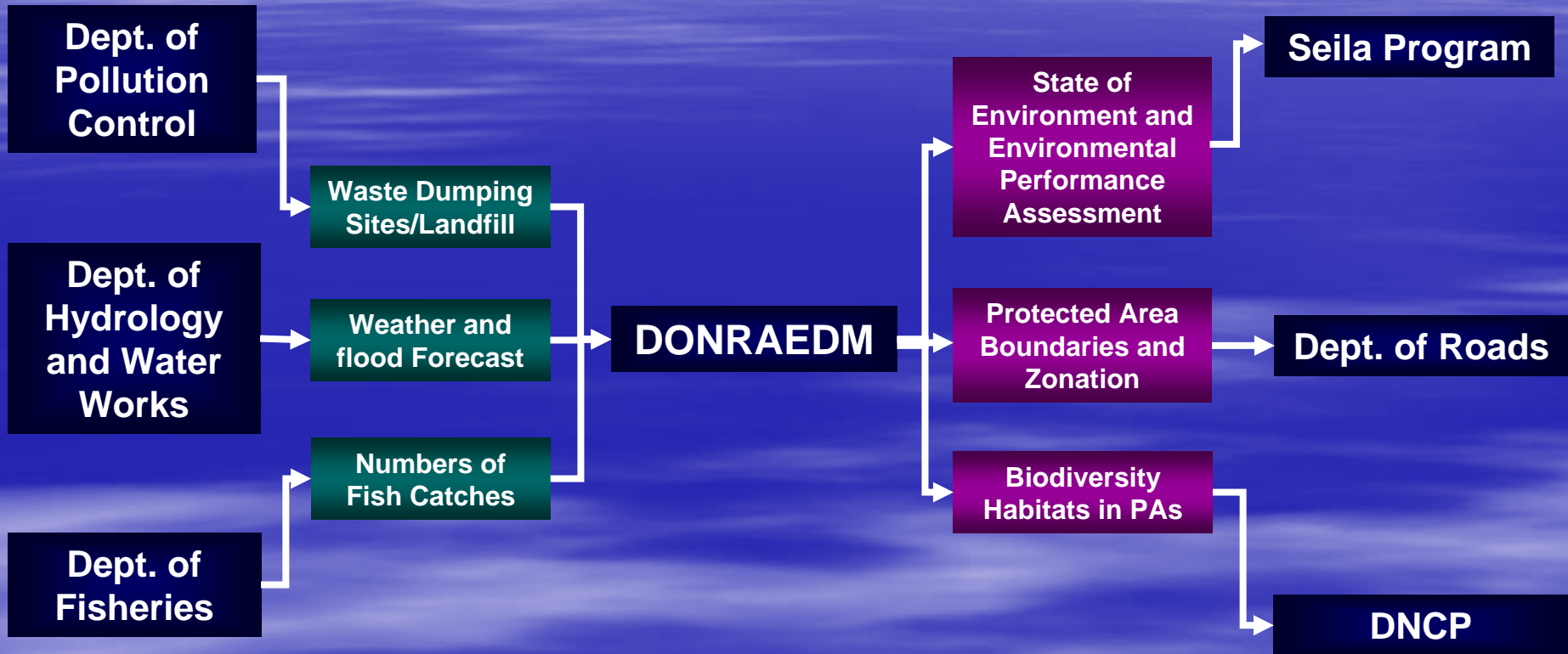
# Data Requirement of Dept. of Natural Resources Assessment and Environmental Data Management (Data Consumer)

Tabular Data	Textual Data	Spatial Data
Agricultural / crop lands	Community fisheries development	Administration maps
Rice production	Protected species regulation	Topography maps
Biodiversity species	Fish Investment guidance	Fish concession distribution
Community fisheries	Fisheries species and migration	Fish sanctuary distribution
Fish concession areas	Water resource planning process	Land cover maps
Fish sanctuary areas	Irrigation management	Hydropower sites
Fishery production	Water qualities	Reservoir sites
Areas of forest	Socio-economic condition	Irrigation System
Water quality substances	Climate	Rain fall distribution
...	...	...

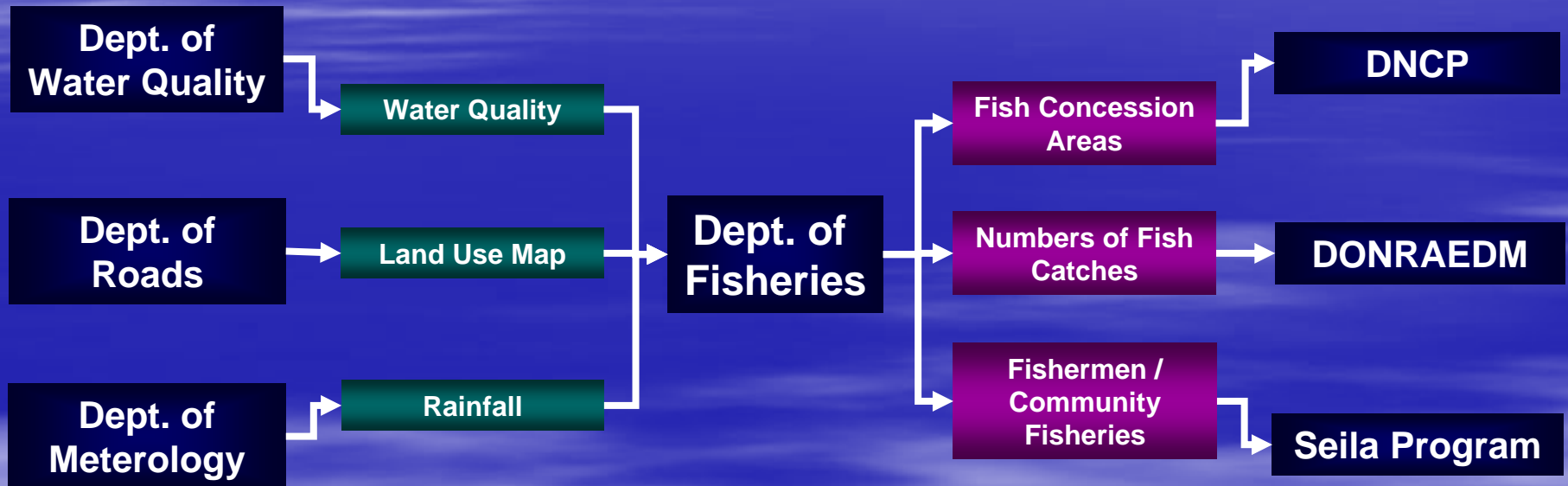
# Data Gaps need to be used by Dept. of Natural Resources Assessment and Environmental Data Management (Data Consumer)

Tabular Data	Textual Data	Spatial Data
→ Fish stocks	Target on agricultural water supplies	Agriculture reservoir maps
Fuel wood production	Biodiversity species protection regulation	Basimetry map
Household timber collection	Erosion and sedimentation	Sedimentation map
Standing Timbers	...	...
Chemical fertilizer and pesticide use		
Agricultural water reservation volume		
...		

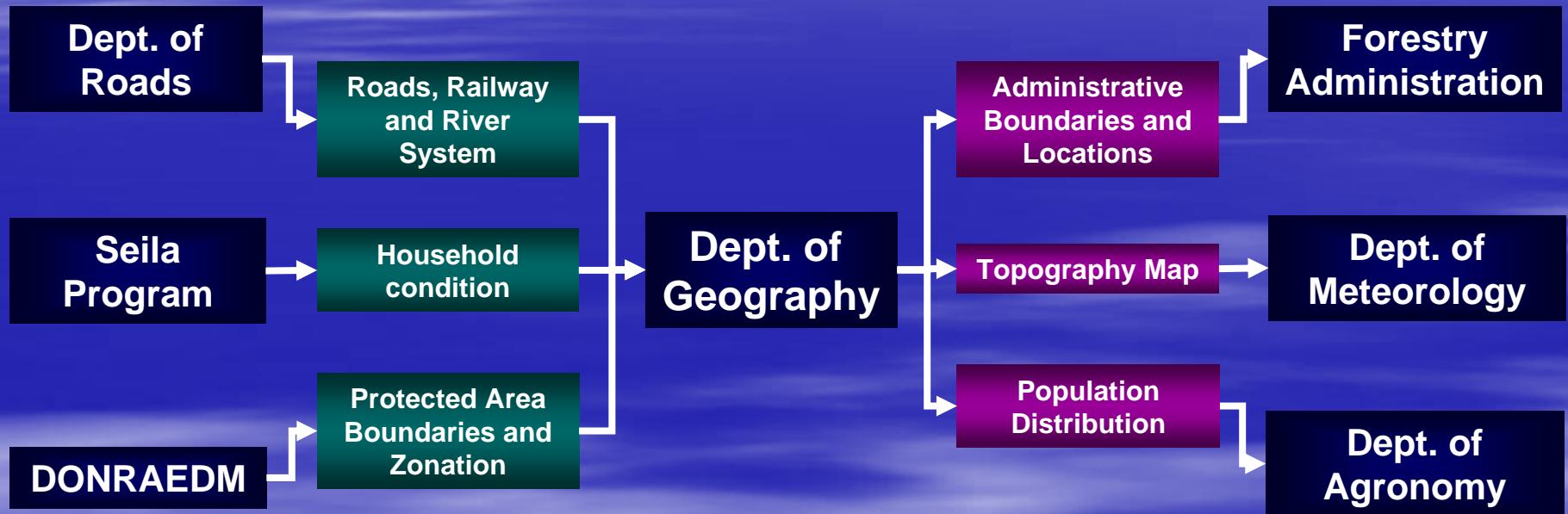
# Data-Information Exchange



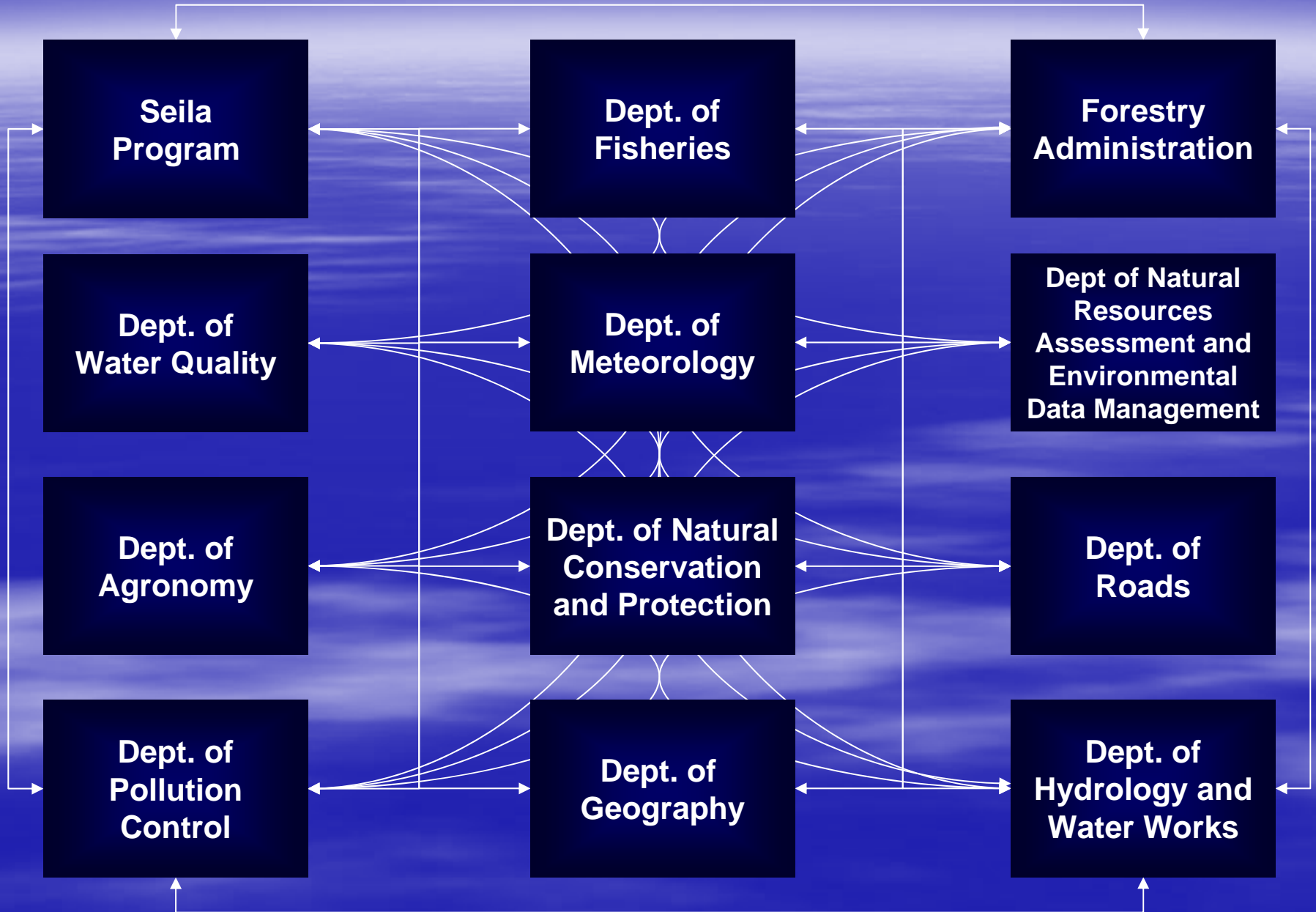
# Data-Information Exchange



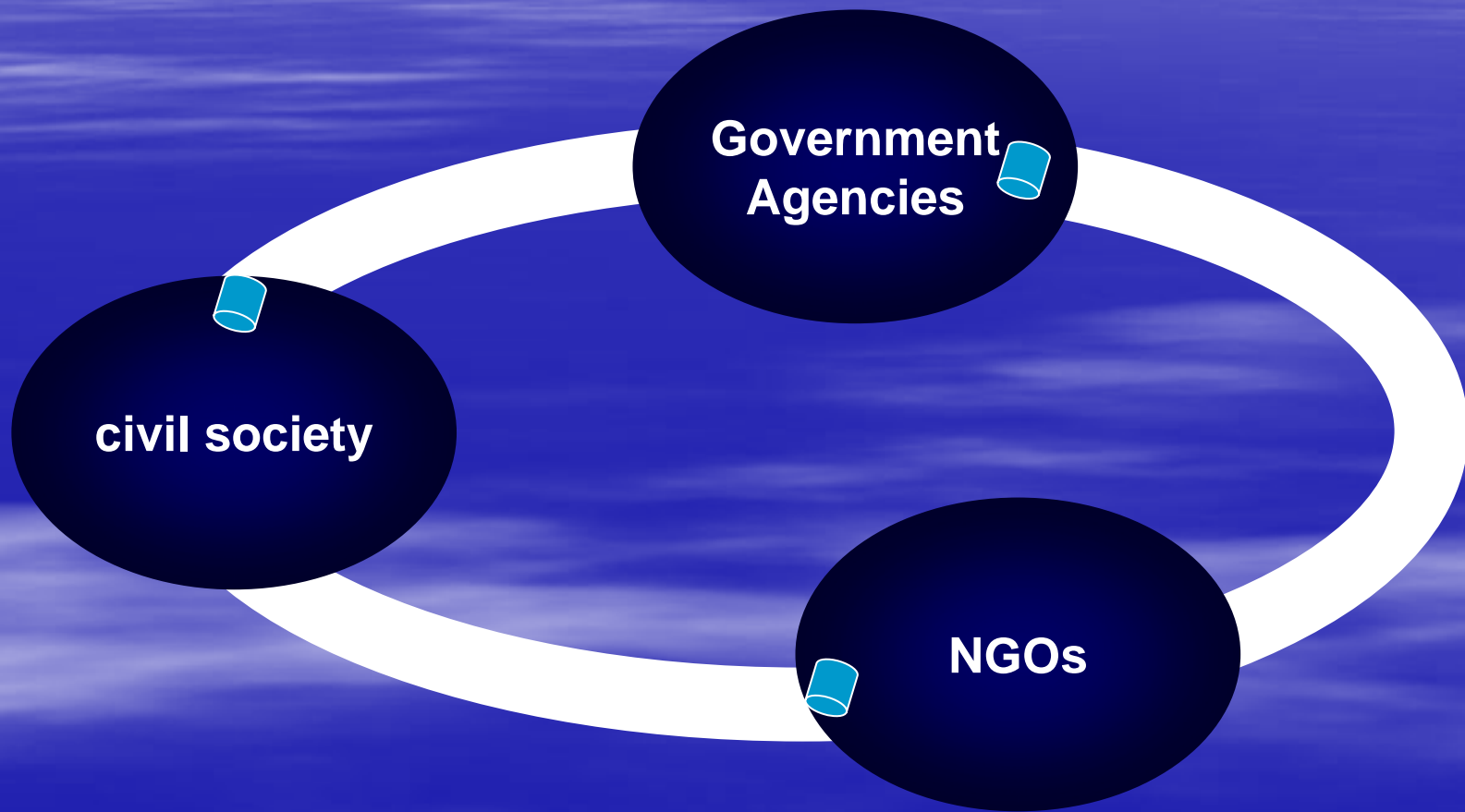
# Data-Information Exchange



# Data-Information Exchange within Line Agencies



# Data-Information Exchange within Stakeholders





ស្វែងរកឥតឃ្លាណា!

